

CLONING SOFTWARE CS-F3020/F5010/F5020

- ◇ This cloning software is designed to perform data entry, settings, and cloning for the IC-F3020/F4020 series VHF/UHF TRANSCEIVERS, or the IC-F5010/F6010 series or IC-F5020/F6020 series VHF/UHF MOBILE TRANSCEIVERS.
- ◇ **HELP FILE:** The CS-F3020/F5010/F5020 has a Help file to describe functions and operation.

■ System requirements

To use this cloning software, the following hardware and software are required:

PC

- Microsoft® Windows® XP, Microsoft® Windows Vista® or Microsoft® Windows® 7 Operating System (OS)
- An RS-232C serial port (D-sub 9-pin) or a USB port

Cable

- For the IC-F3020/F4020 series
The optional OPC-478 CLONING CABLE (RS-232C type) or OPC-478UC* CLONING CABLE (USB type)
- For the IC-F5010/F6010 and IC-F5020/F6020 series
The optional OPC-1122 CLONING CABLE (RS-232C type) or OPC-1122U* CLONING CABLE (USB type)

NOTE:

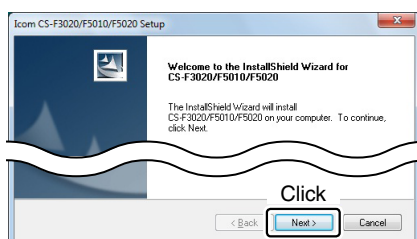
- When using the OPC-478/1122, RS-232C type cloning cable, select "Normal" for the cloning speed setting in the [COM port] menu of the cloning software. Otherwise, a cloning error may occur.
- When using the OPC-478UC/1122U, USB type cloning cable, you must install a USB driver. The driver is supplied with the OPC-478UC/1122U. See the OPC-478UC/1122U instruction manual for details.
- This instruction manual is based on using Microsoft® Windows® 7.

*To use the OPC-478UC/OPC-1122U's USB driver with a 64 bit OS, you can only use Microsoft® Windows® 7.

■ Software installation

When installing the software, log on as the **administrator**.

- ① Make sure Windows has completed its start-up, and no other applications are running.
- ② Insert the CD into a CD drive.
- ③ Double-click the "setup.exe" contained in the CD.
 - If "User Account Control" appears, click [Yes] to continue.
- ④ "Welcome to the InstallShield Wizard for CS-F3020/F5010/F5020" appears. Click [Next>].



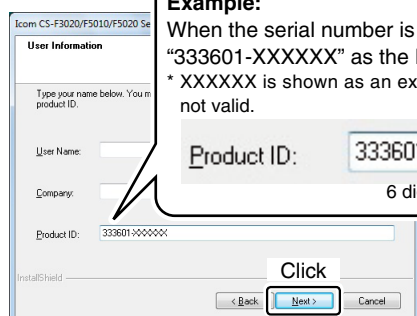
- ⑤ "User Information" appears, and then type your name, your company name and the product ID number in the following manner. Then click [Next >].
 - Product ID number: 333601-(6 digit serial number)
- Please check the serial number on the CD. If you downloaded the software, enter the ID that was provided by your distributor.

Example:

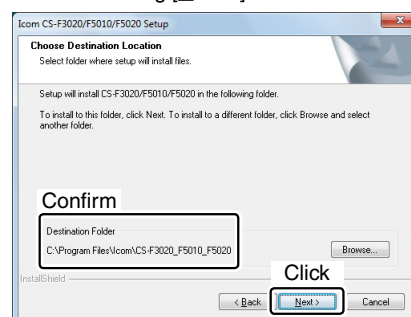
When the serial number is XXXXXX*, enter "333601-XXXXXX" as the ID number.

* XXXXXX is shown as an example only, and is not valid.

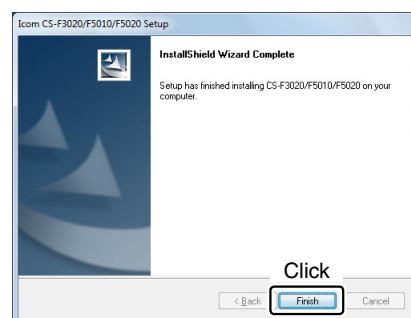
Product ID: 333601-XXXXXX
6 digit serial number



- ⑥ "Choose Destination Location" appears, and then click [Next>].
 - If desired, click [Browse...] to select another destination folder before clicking [Next >].



- ⑦ After the installation is completed, "InstallShield Wizard Complete" appears, and then click [Finish].



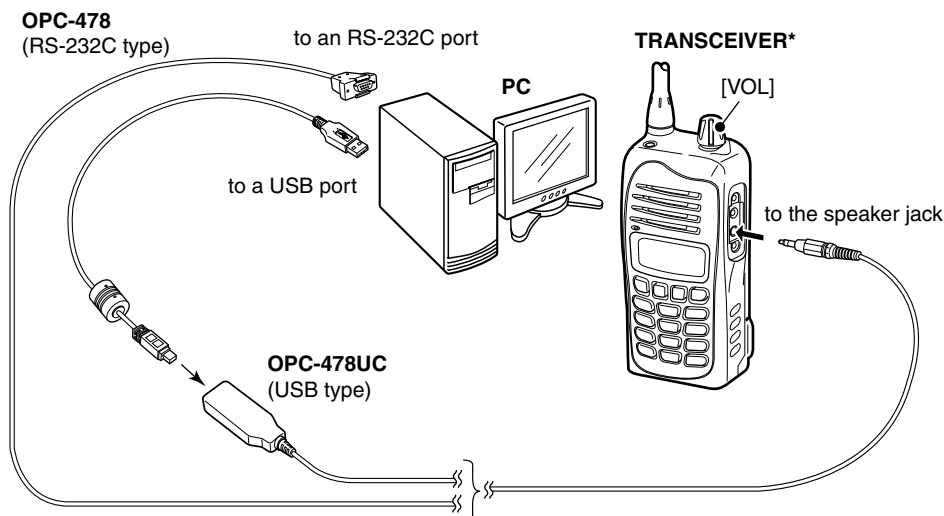
- ⑧ Eject the CD.
- ⑨ A program group 'CS-F3020_F5010_F5020' appears on the program menu, and a 'CS-F3020_F5010_F5020' shortcut icon appears on the desktop.
 - You can uninstall the cloning software using "Uninstall a program" in the Windows Control Panel.

■ Connection

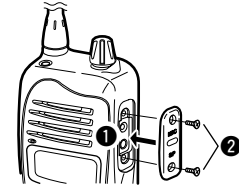
All cloning operations are performed from the PC's keyboard.
Make sure the transceiver power is OFF.

For the IC-F3020/F4020 series

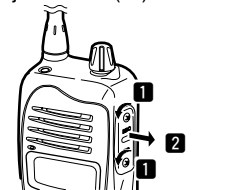
- ① Connect the cloning cable as illustrated below.
- ② Rotate [VOL] to turn ON the transceiver.



Attaching:
Attach the jack cover (①), then tighten the screws (②).



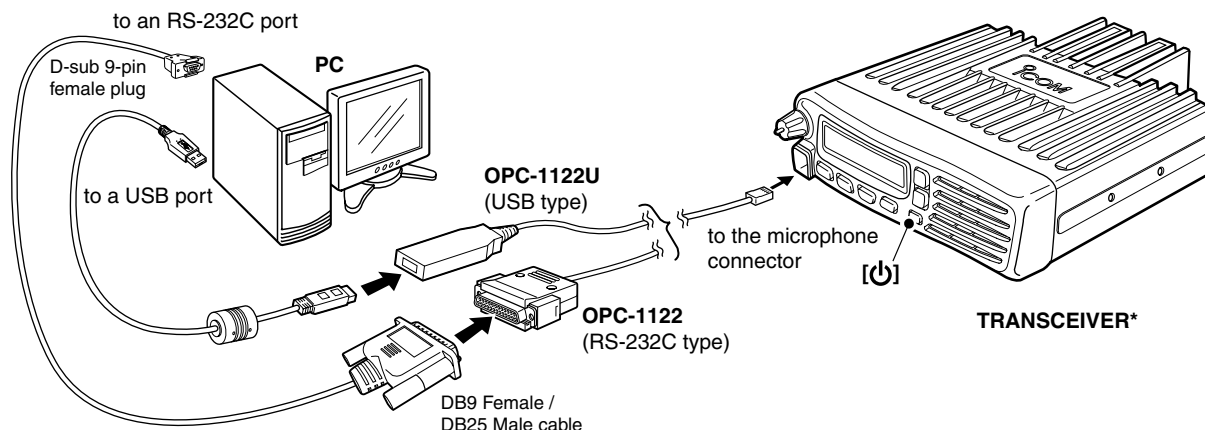
Detaching:
Remove the screws (①), then detach the jack cover (②).



*The illustration shows the 10-key version transceiver.

For the IC-F5010/F6010 and IC-F5020/F6020 series


- ① Connect the cloning cable as illustrated below.
- ② Push [P] to turn ON the transceiver.



*The illustration shows the IC-F5020/F6020 series transceiver.

■ Programming information

- To avoid data loss, you should download all the transceiver's data before entering or editing parameters using the cloning software, even when the transceiver is factory fresh.

Click , or click [Clone] in the top menu of the cloning software, and then select "Read <- TR" to start downloading.

- While downloading or uploading cloning data, **NEVER** turn OFF the transceiver or the PC, and **NEVER** disconnect the cloning cable. Otherwise, the data could be lost or deleted.
- Click [Model] in the top menu of the cloning software to select the model type which you are going to clone from LMR (Land Mobile Radio) and PMR (Private Mobile Radio).

Please refer to the Help file of the cloning software for assistance with the functions or settings.

To open the Help file, click [Help] in the top menu of the cloning software and select "Contents," or simply push the [F1] key of the PC's keyboard.

Icom, Icom Inc. and the Icom logo are registered trademarks of Icom Incorporated (Japan) in Japan, the United States, the United Kingdom, Germany, France, Spain, Russia and/or other countries.

Microsoft, Windows and Windows Vista are registered trademarks of Microsoft Corporation in the United States and/or other countries.
All other products or brands are registered trademarks or trademarks of their respective holders.